



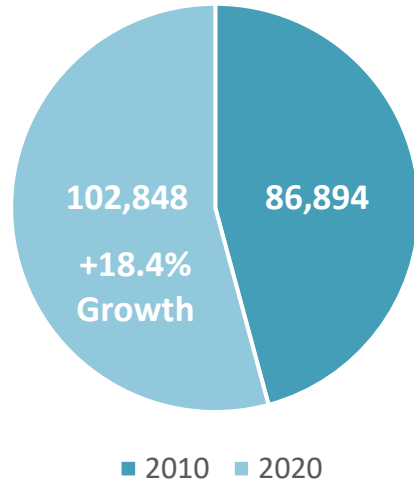
PLATTE COUNTY
ECONOMIC DEVELOPMENT COUNCIL
Let's Write a Success Story

Platte County Demographics & Labor

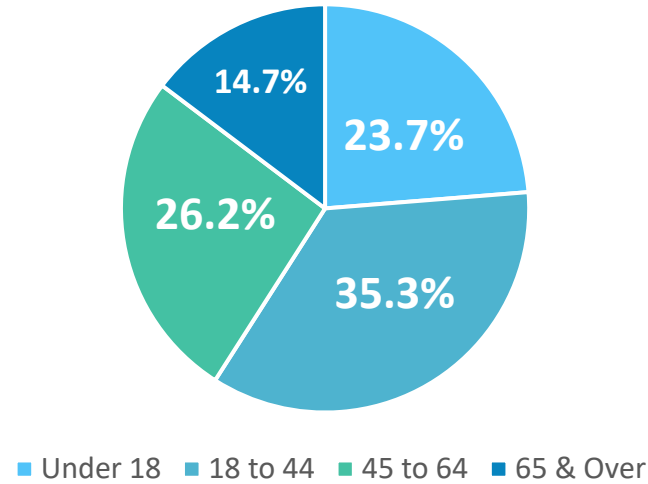
MAY 2023

GENERATED BY KCADC

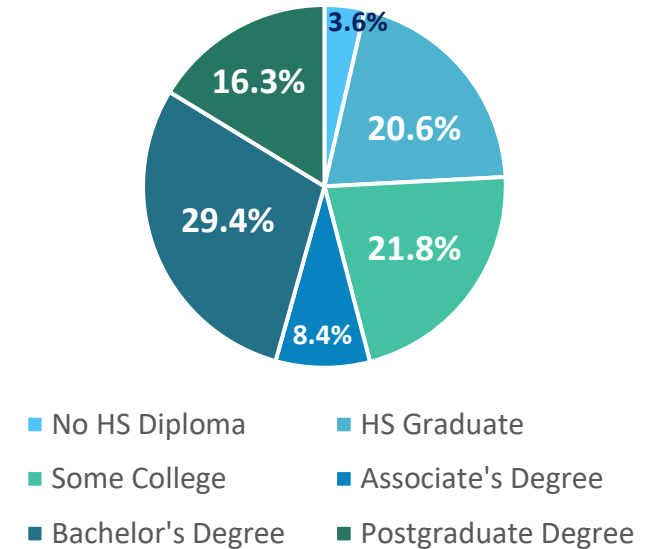
Population 2010-2020



Ages



Education



Housing

42,377 – Total Housing Units (+10.7%)
\$238,800 – Median House Value (+29%)

Economic

\$82,448 – Median Household Income
\$41,193 – Per Capita Income

Transportation

24 Minutes – Commute Time
0.2% – Commute via Public Transportation

Platte County Demographics - 2020

Source: JobsEQ

Industry Snapshot

Industry	Current			10-Year History		5-Year Forecast				
	Empl	Avg Ann Wages	LQ	Empl Change	Ann %	Total Demand	Exits	Transfers	Empl Growth	Ann % Growth
Retail Trade	6,562	\$34,314	1.33	558	0.9%	4,700	2,004	2,650	46	0.1%
Accommodation and Food Services	5,114	\$25,342	1.22	145	0.3%	5,155	2,107	2,551	496	1.9%
Transportation and Warehousing	4,618	\$58,394	1.88	966	2.4%	3,127	1,156	1,690	280	1.2%
Health Care and Social Assistance	4,450	\$60,148	0.63	1,395	3.8%	2,730	1,092	1,280	358	1.6%
Administrative and Support and Waste Management and Remediation Services	3,905	\$51,684	1.22	52	0.1%	2,647	985	1,442	220	1.1%
Manufacturing	3,755	\$69,752	0.94	505	1.5%	2,172	766	1,303	104	0.5%
Educational Services	3,570	\$47,592	0.91	208	0.6%	2,042	860	951	231	1.3%
Wholesale Trade	3,073	\$147,453	1.66	1,141	4.7%	1,837	640	1,093	105	0.7%
Construction	2,830	\$73,282	0.97	1,000	4.5%	1,517	505	903	110	0.8%
Professional, Scientific, and Technical Services	2,335	\$79,149	0.64	727	3.8%	1,237	397	682	158	1.3%
Other Services (except Public Administration)	1,878	\$34,766	0.89	203	1.1%	1,320	494	681	145	1.5%
Real Estate and Rental and Leasing	1,460	\$68,416	1.67	518	4.5%	815	344	424	47	0.6%
Finance and Insurance	1,456	\$79,642	0.73	-398	-2.4%	749	263	432	55	0.7%
Arts, Entertainment, and Recreation	1,424	\$33,627	1.49	-29	-0.2%	1,190	458	633	99	1.4%
Public Administration	1,204	\$71,036	0.53	189	1.7%	626	249	354	23	0.4%
Information	648	\$74,000	0.64	-244	-3.1%	407	118	215	74	2.2%
Agriculture, Forestry, Fishing and Hunting	360	\$32,512	0.55	16	0.5%	245	102	131	12	0.7%
Management of Companies and Enterprises	352	\$105,817	0.46	-296	-5.9%	182	62	106	13	0.7%
Utilities	234	\$118,417	0.94	-152	-4.9%	82	39	68	-25	-2.2%
Mining, Quarrying, and Oil and Gas Extraction	57	\$65,320	0.33	11	2.3%	32	10	20	2	0.7%
Total - All Industries	49,285	\$59,104	1.00	6,513	1.4%	31,658	12,151	16,933	2,575	1.0%

Source: JobsEQ – Data as of 2022 Q4

Occupation Snapshot

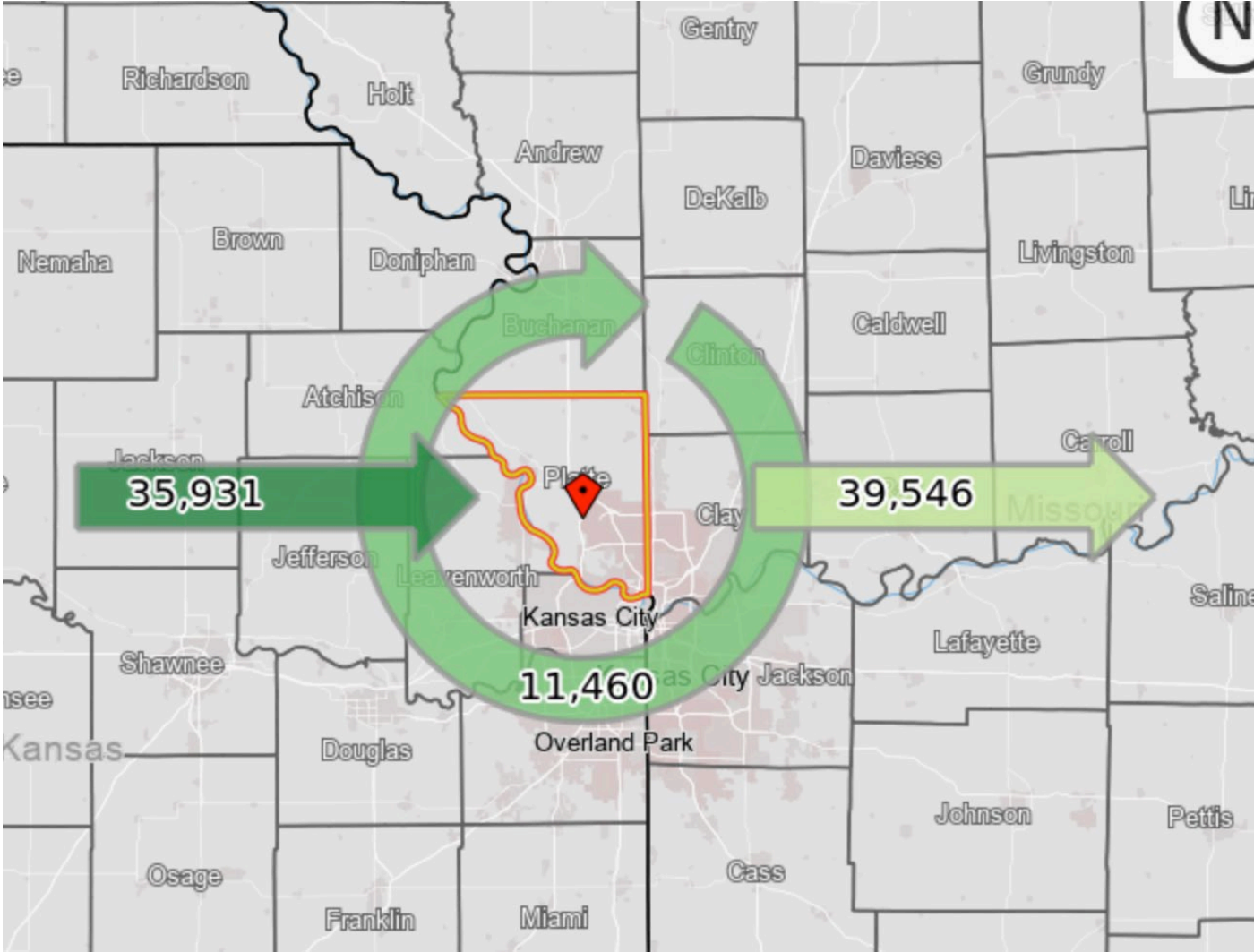
Occupation	Current			10-Year History		5-Year Forecast				
	Empl	Mean Ann Wages ²	LQ	Empl Change	Ann %	Total Demand	Exits	Transfers	Empl Growth	Ann % Growth
Office and Administrative Support Occupations	6,634	\$45,600	1.09	-765	-1.1%	4,125	1,808	2,257	59	0.2%
Sales and Related Occupations	5,565	\$48,200	1.21	42	0.1%	3,971	1,710	2,163	98	0.3%
Transportation and Material Moving Occupations	5,394	\$48,200	1.25	1,517	3.4%	4,225	1,536	2,355	335	1.2%
Food Preparation and Serving Related Occupations	4,911	\$30,800	1.26	195	0.4%	5,198	2,163	2,609	425	1.7%
Production Occupations	3,089	\$48,600	1.11	410	1.4%	1,843	674	1,129	40	0.3%
Management Occupations	3,079	\$112,900	0.91	859	3.3%	1,578	465	917	195	1.2%
Installation, Maintenance, and Repair Occupations	2,719	\$58,700	1.43	153	0.6%	1,509	512	842	154	1.1%
Business and Financial Operations Occupations	2,524	\$81,100	0.80	783	3.8%	1,343	399	781	162	1.3%
Educational Instruction and Library Occupations	2,488	\$55,900	0.95	266	1.1%	1,378	590	605	183	1.4%
Healthcare Practitioners and Technical Occupations	2,188	\$91,400	0.77	800	4.7%	845	346	351	148	1.3%
Construction and Extraction Occupations	1,903	\$60,800	0.86	475	2.9%	1,043	339	621	83	0.9%
Building and Grounds Cleaning and Maintenance Occupations	1,640	\$37,900	1.01	184	1.2%	1,244	509	643	91	1.1%
Personal Care and Service Occupations	1,267	\$35,000	1.06	-71	-0.5%	1,332	491	714	126	1.9%
Healthcare Support Occupations	1,266	\$34,700	0.58	356	3.4%	1,104	426	551	127	1.9%
Computer and Mathematical Occupations	1,165	\$92,300	0.68	469	5.3%	546	137	304	104	1.7%
Protective Service Occupations	1,062	\$48,400	1.01	452	5.7%	759	324	384	51	0.9%
Arts, Design, Entertainment, Sports, and Media Occupations	732	\$58,000	0.85	95	1.4%	477	173	245	59	1.6%
Community and Social Service Occupations	540	\$54,600	0.62	167	3.8%	328	114	164	50	1.8%
Architecture and Engineering Occupations	500	\$88,000	0.62	-25	-0.5%	218	73	119	27	1.1%
Life, Physical, and Social Science Occupations	303	\$78,900	0.70	124	5.4%	166	37	112	16	1.1%
Legal Occupations	189	\$115,400	0.45	-9	-0.5%	79	30	35	13	1.4%
Farming, Fishing, and Forestry Occupations	128	\$39,200	0.41	35	3.2%	114	35	73	7	1.1%
Total - All Occupations	49,285	\$56,300	1.00	6,513	1.4%	33,442	12,892	17,975	2,575	1.0%

Source: JobsEQ – Data as of 2022 Q4

Platte County Inflow/Outflow

Area Labor Market Size (All Jobs)

2020	Count	Share
Employed in Platte County	47,391	100.0%
Living in Platte County	51,006	107.6%
Net Job Inflow (+) or Outflow (-)	-3,615	



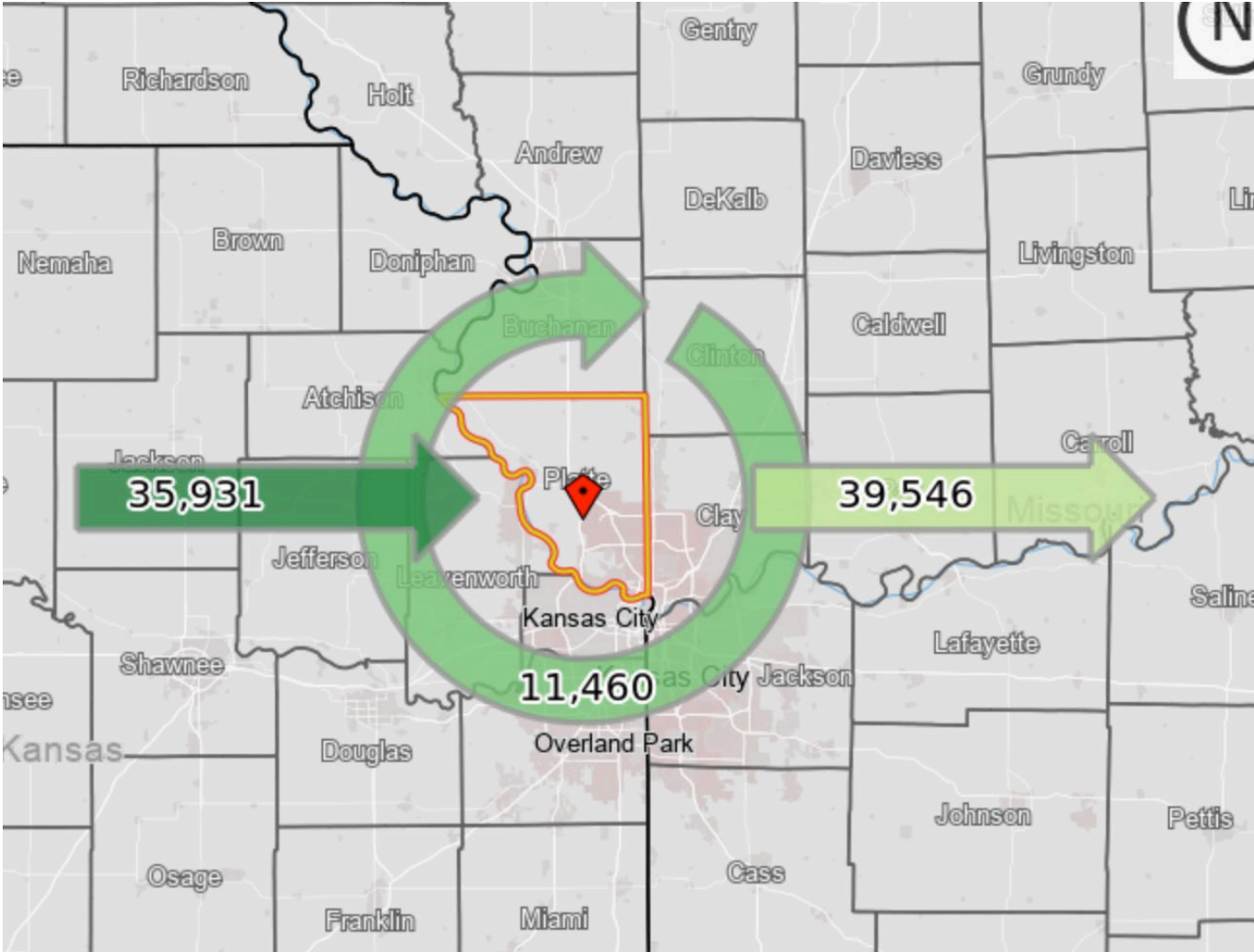
Source: US Census Bureau, OnTheMap Application and LEHD Origin-Destination Employment Statistics

In-Area Labor Force (All Jobs)

2020	Count	Share
Living in Platte County	51,006	100.0%
Living & Employed in Platte County	11,460	22.5%
Living in Platte County but Employed Out	39,546	75.8%

In-Area Employment (All Jobs)

2020	Count	Share
Employed in Platte County	47,391	100.0%
Employed & Living in Platte County	11,460	24.2%
Employed in Platte County but Live Out	35,931	75.8%

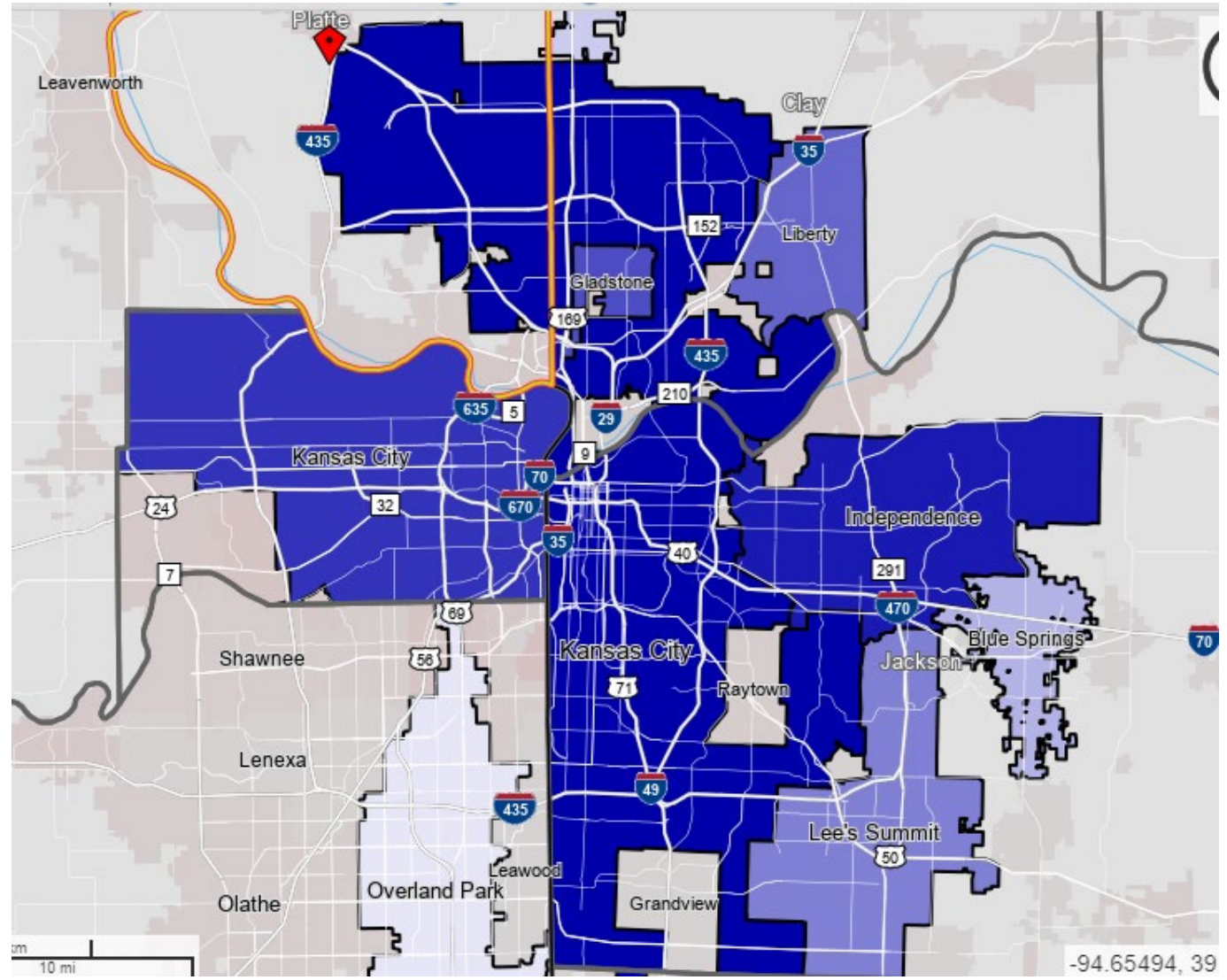


Source: US Census Bureau, OnTheMap Application and LEHD Origin-Destination Employment Statistics

Job Counts By Places (Cities)

2020	Count	Share
All Places	47,391	100.0%
Kansas City	16,610	35.0%
Independence	1,869	3.9%
Kansas City, KS	1,835	3.9%
Gladstone	1,690	3.6%
Liberty	995	2.1%
Lee's Summit	875	2.1%
St. Joseph	819	1.7%
Blue Springs	798	1.7%
Smithville	736	1.6%
Overland Park	734	1.5%
Other Places	20,430	43.1%

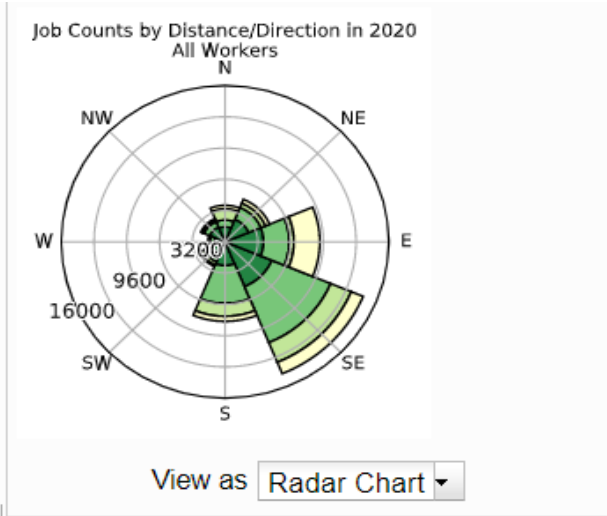
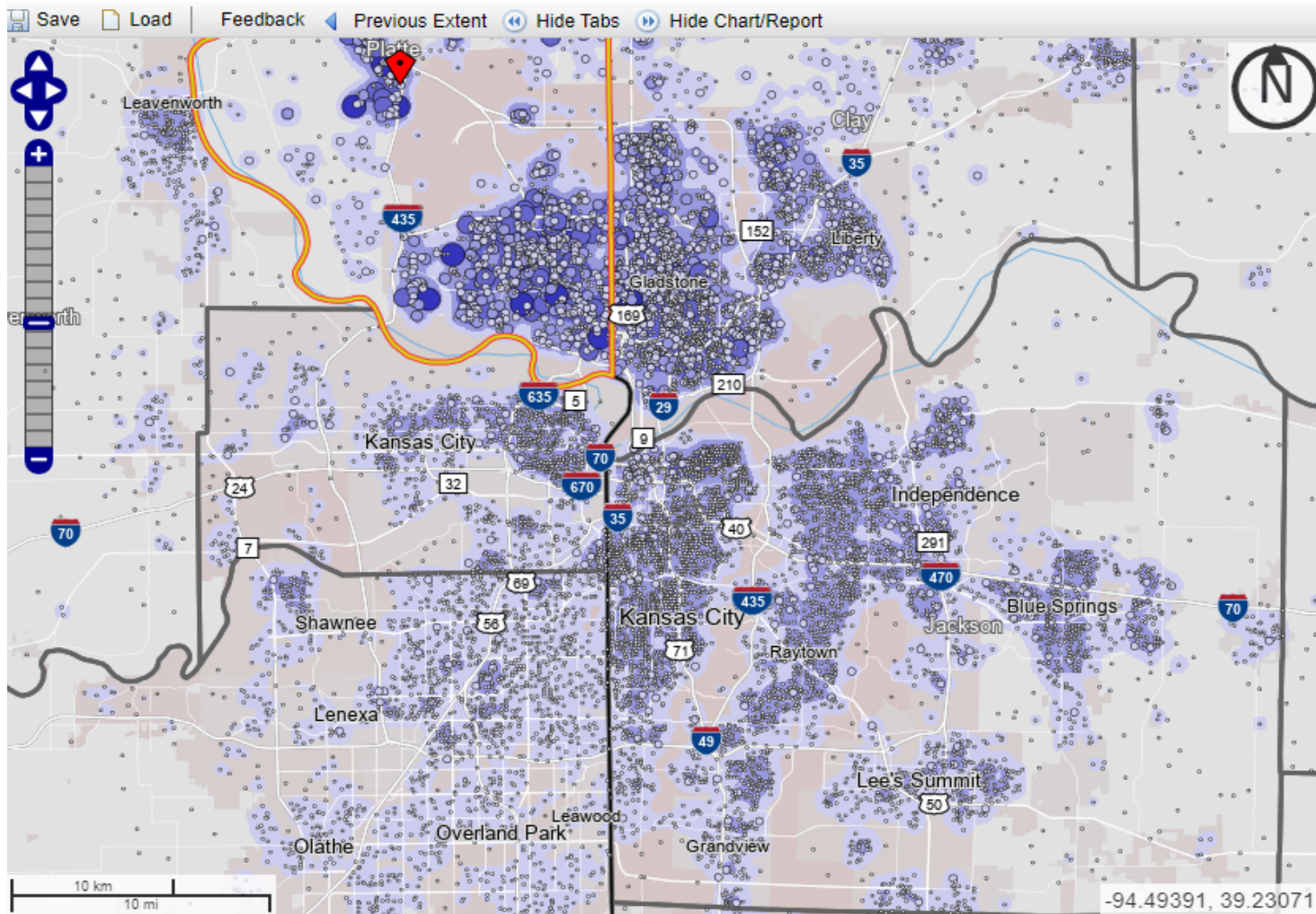
***Where the In-flow workers come from....*



Source: US Census Bureau, OnTheMap Application and LEHD Origin-Destination Employment Statistics (Beginning of Quarter Employment, 2nd Quarter of 2002-2020)

Distance/Direction

***Where the Out-Flow workers are driving to...*



Jobs by Distance - Work Census Block to Home Census Block

	2020	
	Count	Share
Total All Jobs	47,391	100.0%
Less than 10 miles	19,229	40.6%
10 to 24 miles	16,425	34.7%
25 to 50 miles	6,161	13.0%
Greater than 50 miles	5,576	11.8%

Industry vs Occupation

Top Industries

Retail Trade

Accommodation and Food Services

Transportation and Warehousing

Health Care and Social Assistance

Administrative and Support and Waste Management and Remediation Services

Manufacturing

Educational Services

Wholesale Trade

Construction

Professional, Scientific, and Technical Services

Other Services (except Public Administration)

Real Estate and Rental and Leasing

Finance and Insurance

Arts, Entertainment, and Recreation

Public Administration

Information

Agriculture, Forestry, Fishing and Hunting

Management of Companies and Enterprises

Utilities

Mining, Quarrying, and Oil and Gas Extraction

Top Occupations

Office and Administrative Support Occupations

Sales and Related Occupations

Transportation and Material Moving Occupations

Food Preparation and Serving Related Occupations

Production Occupations

Management Occupations

Installation, Maintenance, and Repair Occupations

Business and Financial Operations Occupations

Educational Instruction and Library Occupations

Healthcare Practitioners and Technical Occupations

Construction and Extraction Occupations

Building and Grounds Cleaning and Maintenance Occupations

Personal Care and Service Occupations

Healthcare Support Occupations

Computer and Mathematical Occupations

Protective Service Occupations

Arts, Design, Entertainment, Sports, and Media Occupations

Community and Social Service Occupations

Architecture and Engineering Occupations

Life, Physical, and Social Science Occupations

Legal Occupations

Farming, Fishing, and Forestry Occupations