

January 2023
Kansas City Metro Area

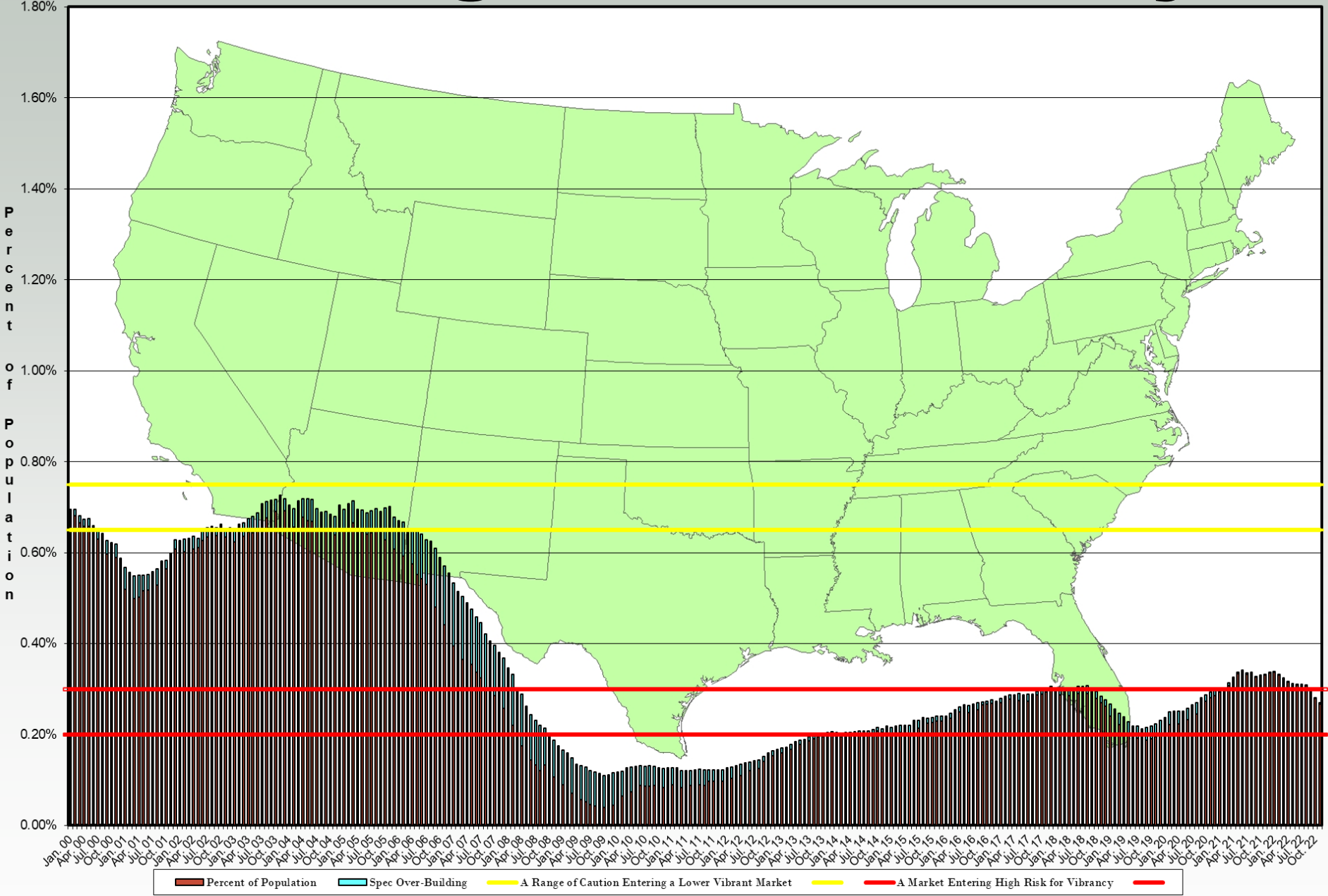
Housing Update & Market Discussion

Presented By:

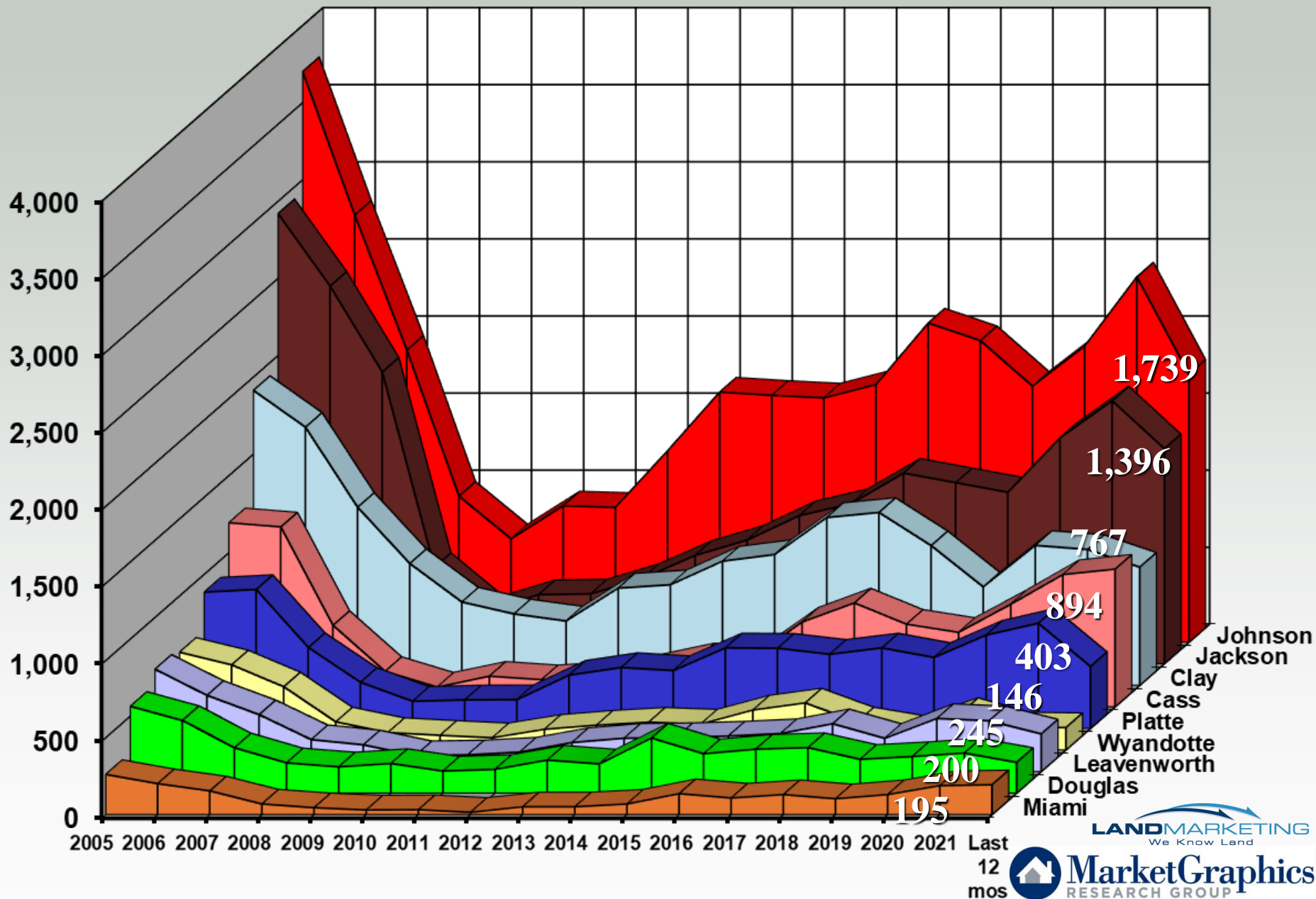
Dan Whitney



KC Housing Market Vibrancy



Permits By County



Metro New Home Activity

(Change From
January 2022)

Total Subdivisions

1,117 (+59)

Total Permits (last 12-months)

5,985 (-1,350)

Total Homes Under Construction

4,844 (-113)

Total Newly Finished, Unoccupied Homes

1,006 (+490)

Total Developed Lots

12,074 (-208)

Platte County New Home Activity

(Change From
January 2022)

Total Subdivisions

71 (+8)

Total Permits (last 12-months)

371 (-300)

Total Homes Under Construction

459 (+33)

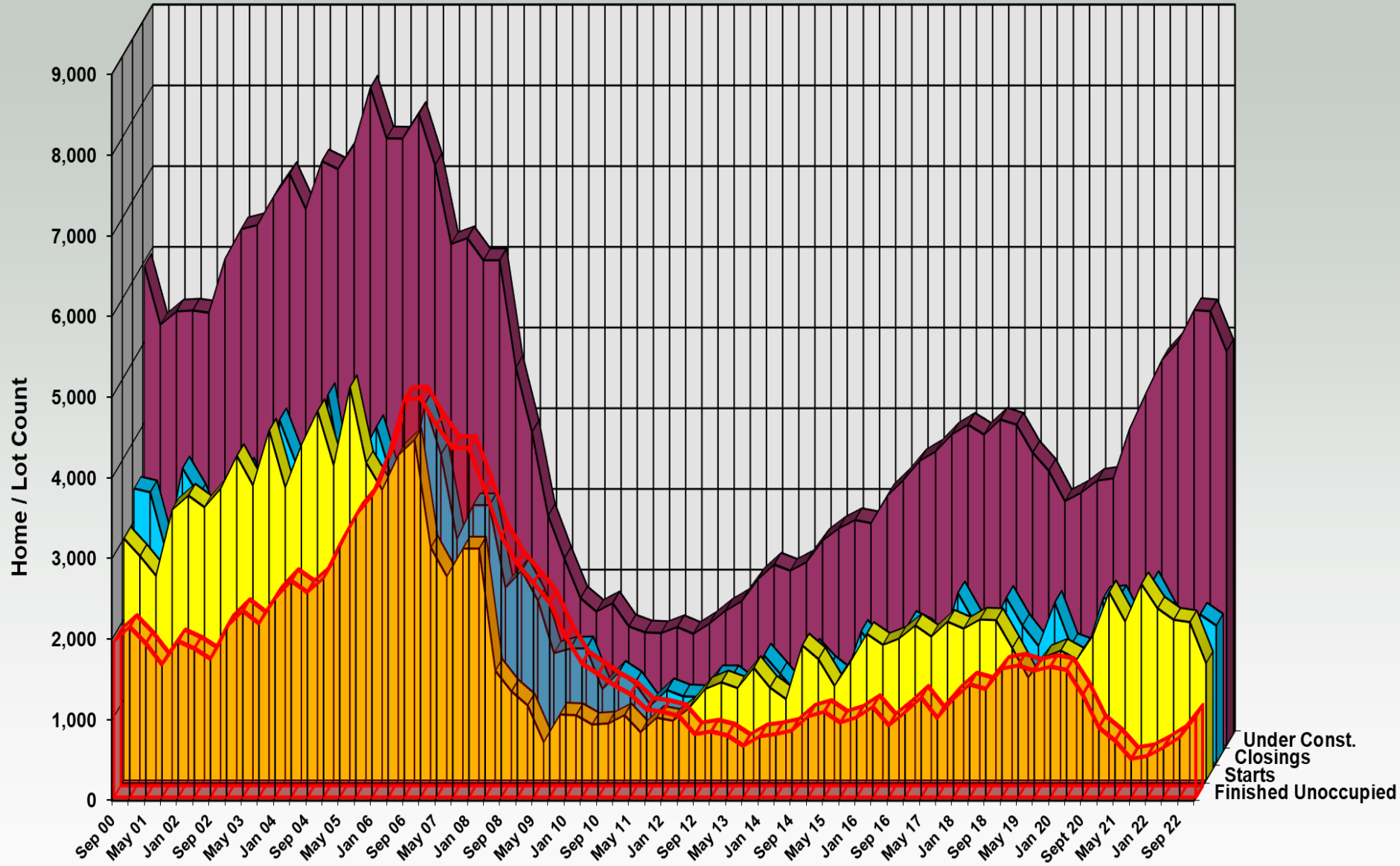
Total Newly Finished, Unoccupied Homes

60 (-4)

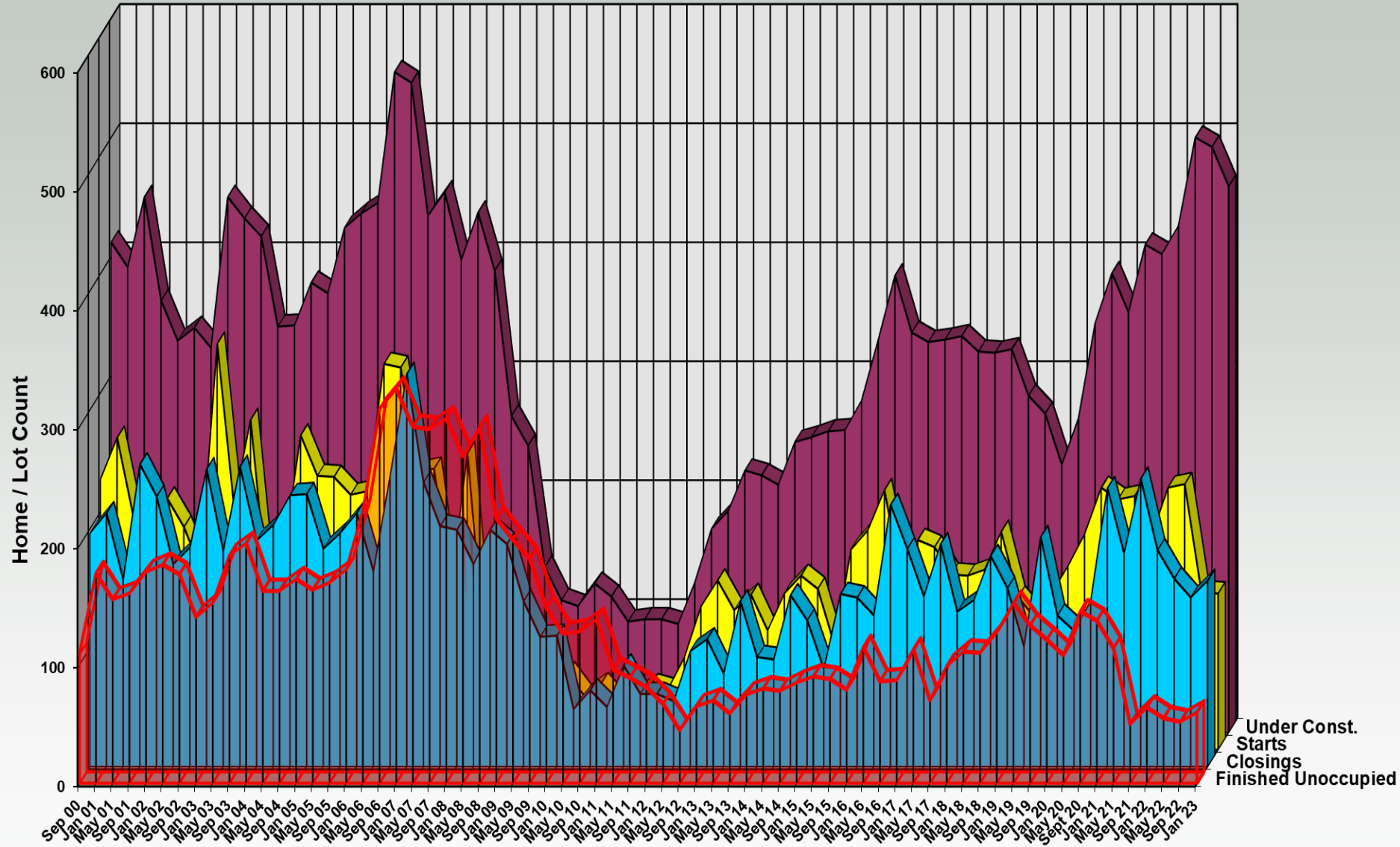
Total Developed Lots

1,060 (-56)

Metro-Wide Housing Activity

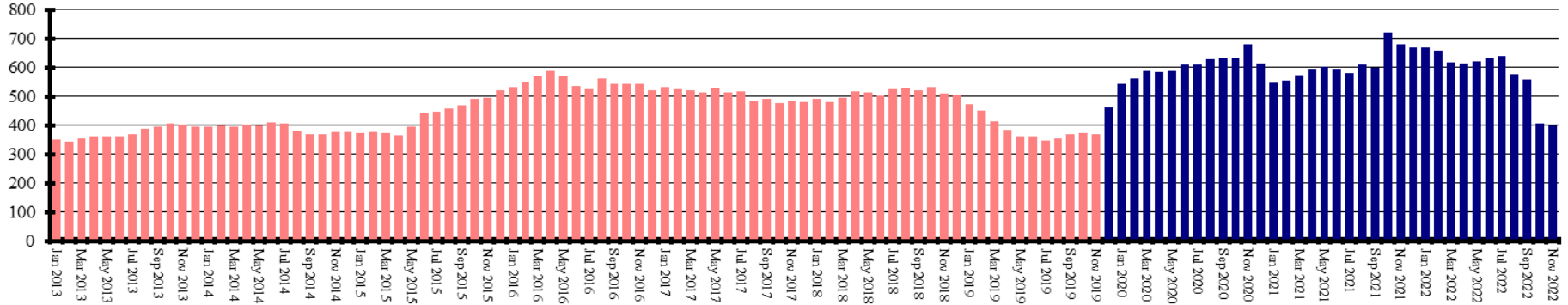


Platte County Housing Activity

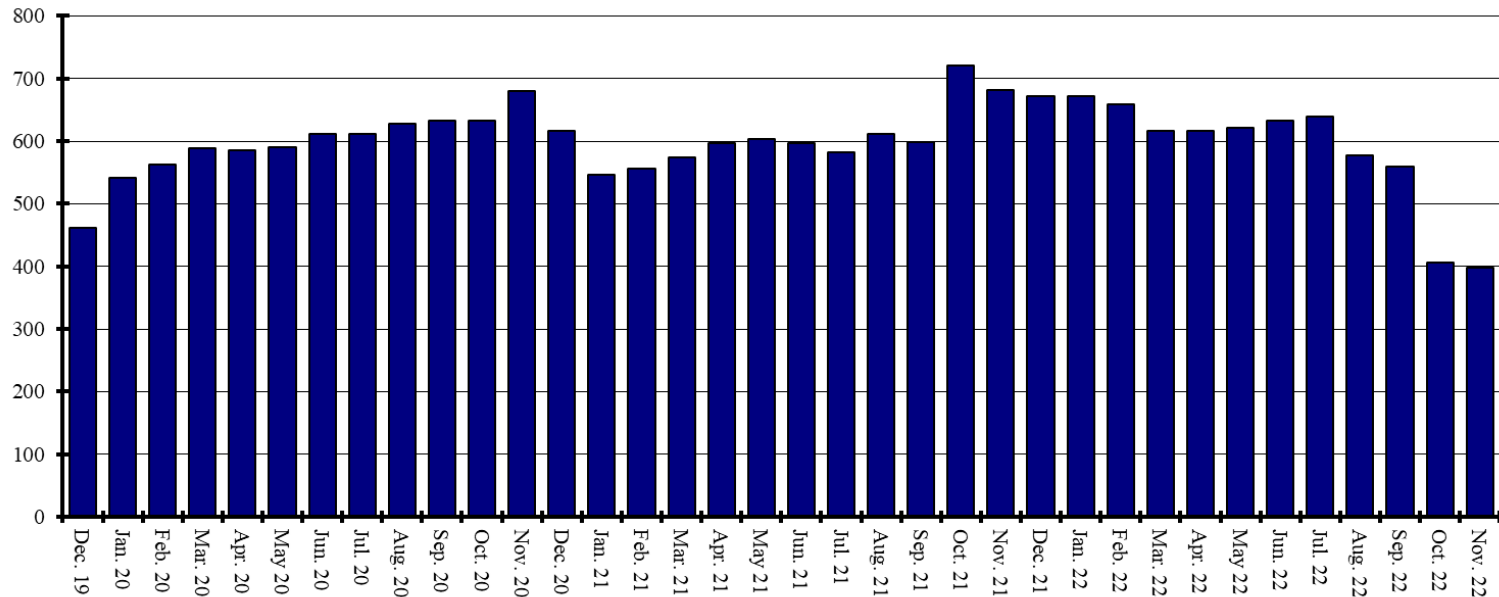


Platte County Permits

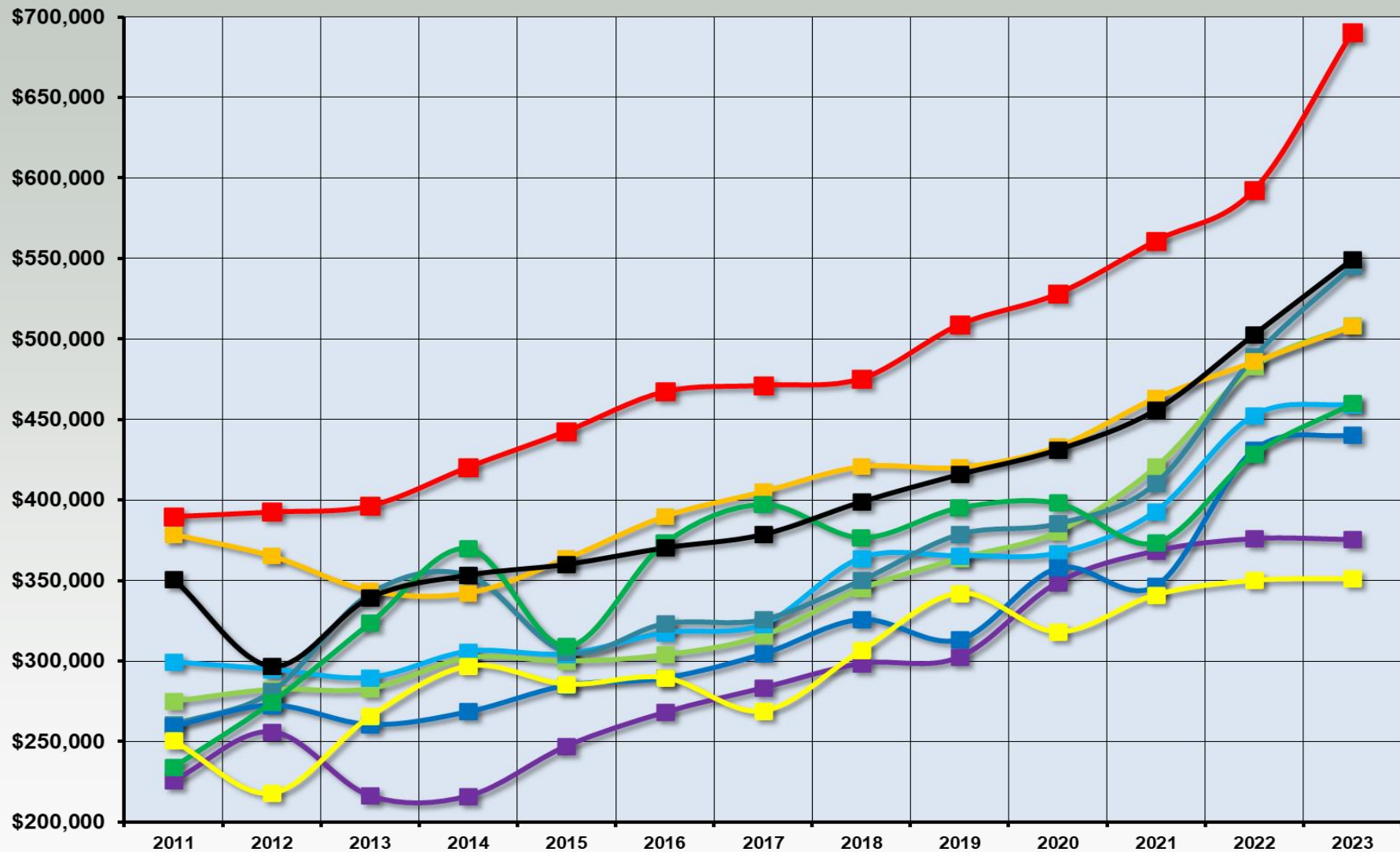
Permits by 12-Month Period Ending in Month Shown



Permits by 12-Month Period Ending in Month Shown



Average New SF Home Price

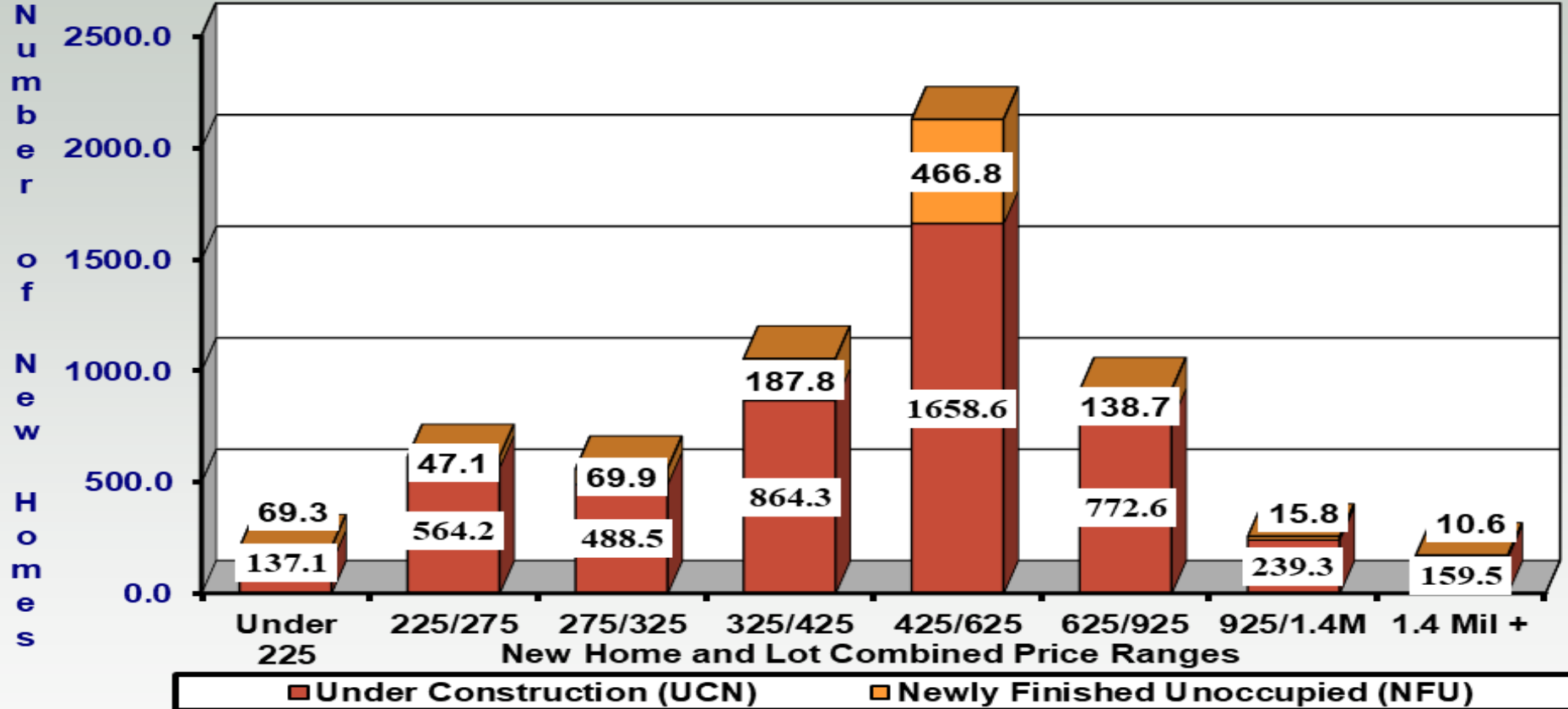


■ Johnson ■ Clay ■ Jackson ■ Cass ■ Platte
■ Wyandotte ■ Leavenworth ■ Douglas ■ Miami ■ Metro Area

Metro-Wide

Counted Inventory New Homes

Max Preferred NFU Today	45.4	134.5	134.0	273.5	595.1	273.4	81.6	54.4	Total 1592.0
NFU 12 Months Back	68.1	30.2	49.6	146.7	177.7	45.5	7.3	4.9	530.0
NFU 8 Months Back	69.2	49.6	54.0	136.5	243.2	66.9	5.8	3.9	629.0
NFU 4 Months Back	130.7	53.3	53.5	133.3	276.5	85.3	9.9	6.6	749.0
Current NFU	69.3	47.1	69.9	187.8	466.8	138.7	15.8	10.6	1006.0

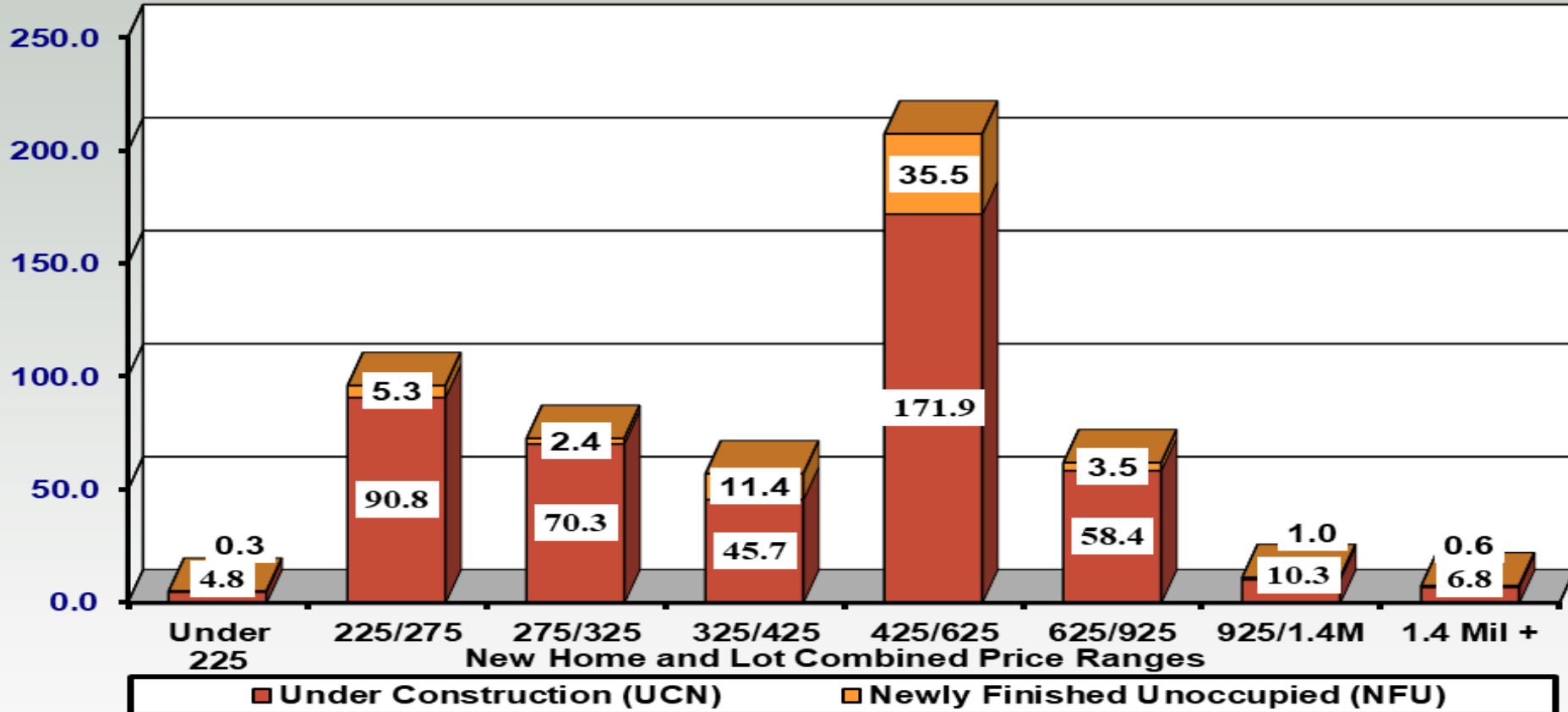


	Under 225	225/275	275/325	325/425	425/625	625/925	925/1.4M	1.4 Mil +	Total
COUNTED HOME INVENTORY	206.4	611.3	558.4	1052.1	2125.4	911.3	255.1	170.1	5890.0
NET HOME INVENTORY	79.5	124.1	122.7	241.0	527.6	191.9	51.0	34.0	1371.9
PROJ. MONTHLY DEMAND	11.4	37.0	44.1	94.5	157.9	57.4	17.1	11.6	431.0
NO. MONTHS SUPPLY	7.0	3.4	2.8	2.6	3.3	3.3	3.0	2.9	3.2

Platte County

Counted Inventory New Homes

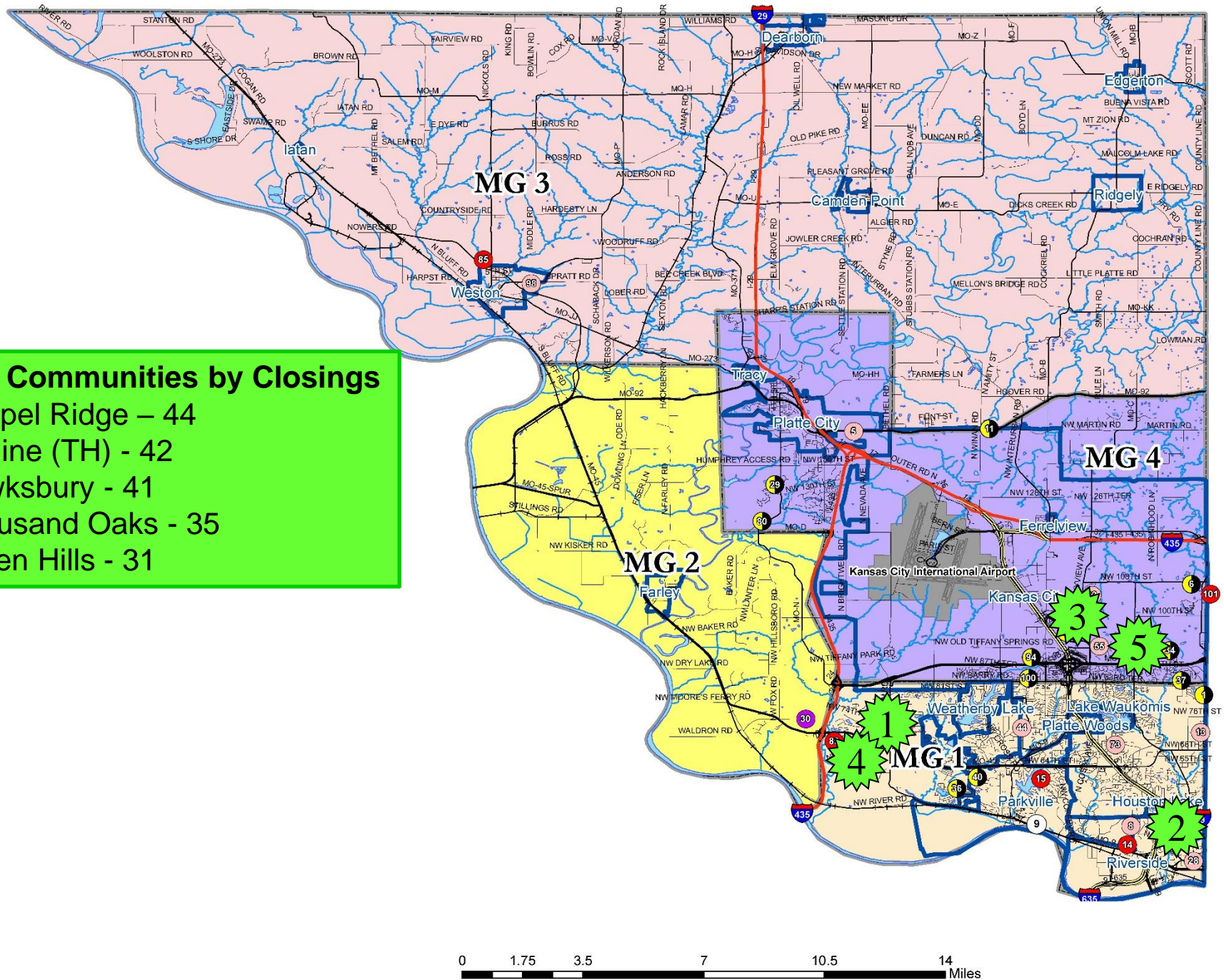
									Total
Max Preferred NFU Today	1.1	21.1	17.4	14.8	58.1	18.6	3.6	2.4	137.2
NFU 12 Months Back	7.2	7.8	3.2	13.9	25.0	5.2	1.1	0.7	64.0
NFU 8 Months Back	0.7	11.9	2.6	10.5	22.8	4.9	1.0	0.6	55.0
NFU 4 Months Back	0.9	8.3	2.4	10.0	25.0	3.3	1.3	0.8	52.0
Current NFU	0.3	5.3	2.4	11.4	35.5	3.5	1.0	0.6	60.0



	Under 225	225/275	275/325	325/425	425/625	625/925	925/1.4M	1.4 Mil +	Total
COUNTED HOME INVENTORY	5.1	96.1	72.7	57.1	207.4	62.0	11.2	7.5	519.0
NET HOME INVENTORY	1.0	19.2	14.5	13.6	41.5	12.4	2.2	1.5	106.0
PROJ. MONTHLY DEMAND	0.4	7.1	4.6	5.7	17.7	2.8	0.9	0.5	39.6
NO. MONTHS SUPPLY	2.4	2.7	3.2	2.4	2.3	4.5	2.4	3.0	2.7

Top 5 Communities by Closings

- 1 Chapel Ridge – 44
- 2 Skyline (TH) - 42
- 3 Hawksbury - 41
- 4 Thousand Oaks - 35
- 5 Green Hills - 31



Housing Forecast

Forecast Busters

Headwinds

- Interest Rate Stability
- \$\$\$\$ (Income/Payment)
- Lot Supply
- Labor Supply
- Inflation

Tailwinds

- Low Inventory Levels
- Demographics
- Builder Reaction in KC
- Dynamic Metro KC
- Employment Growth

Crosswinds

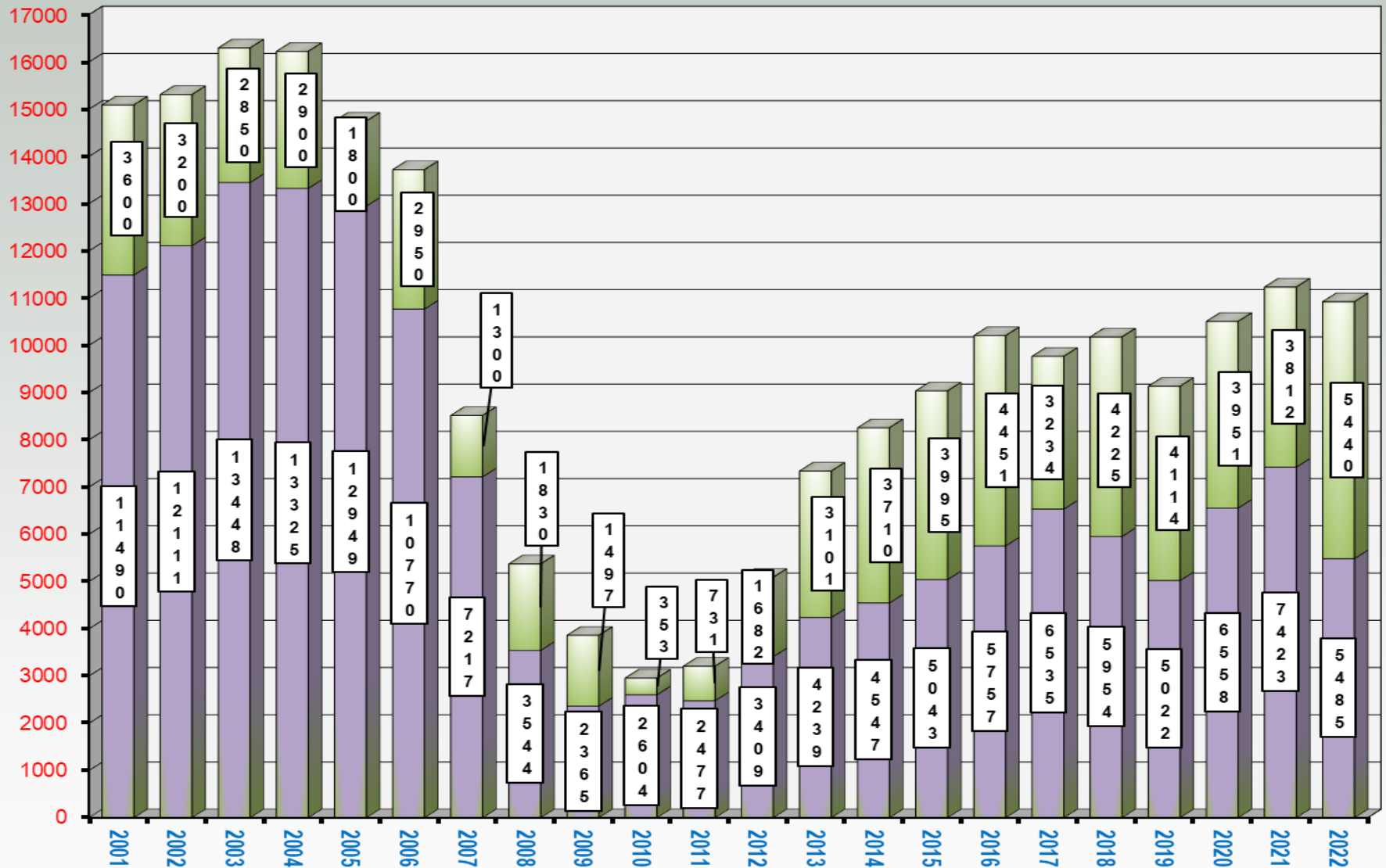
- KC Price Stability
- Expanding Product Range
- Demographics
- Falling Rent Rates

I Could Use a Little Breeze Here!

- Fix Immigration Laws
- KCMO, Make the Pain Go Away!
- Rent-to-Own Option?

Permits

(Multifamily & Single Family)

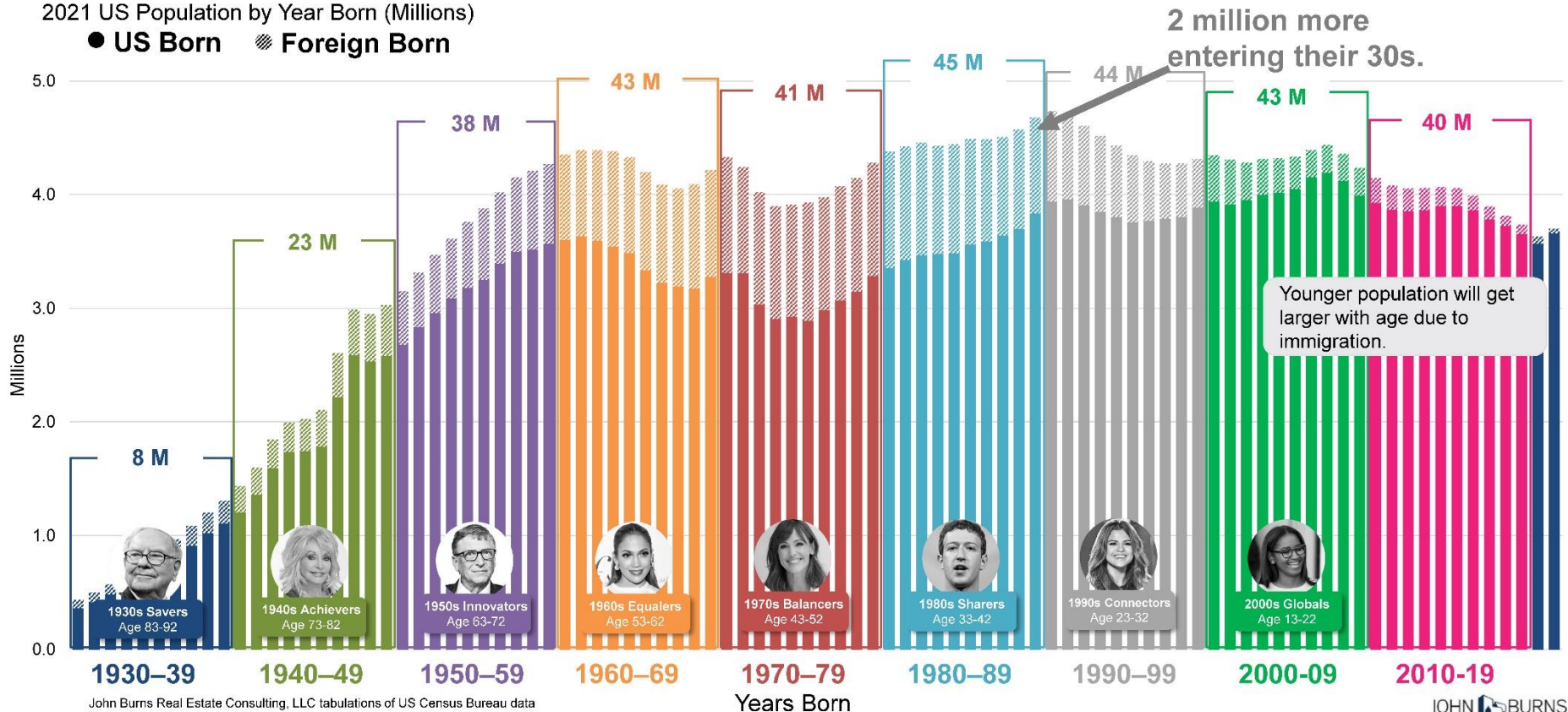


Labor Supply

Define the generations by decade born to simplify decision making.

2021 US Population by Year Born (Millions)

● US Born ● Foreign Born

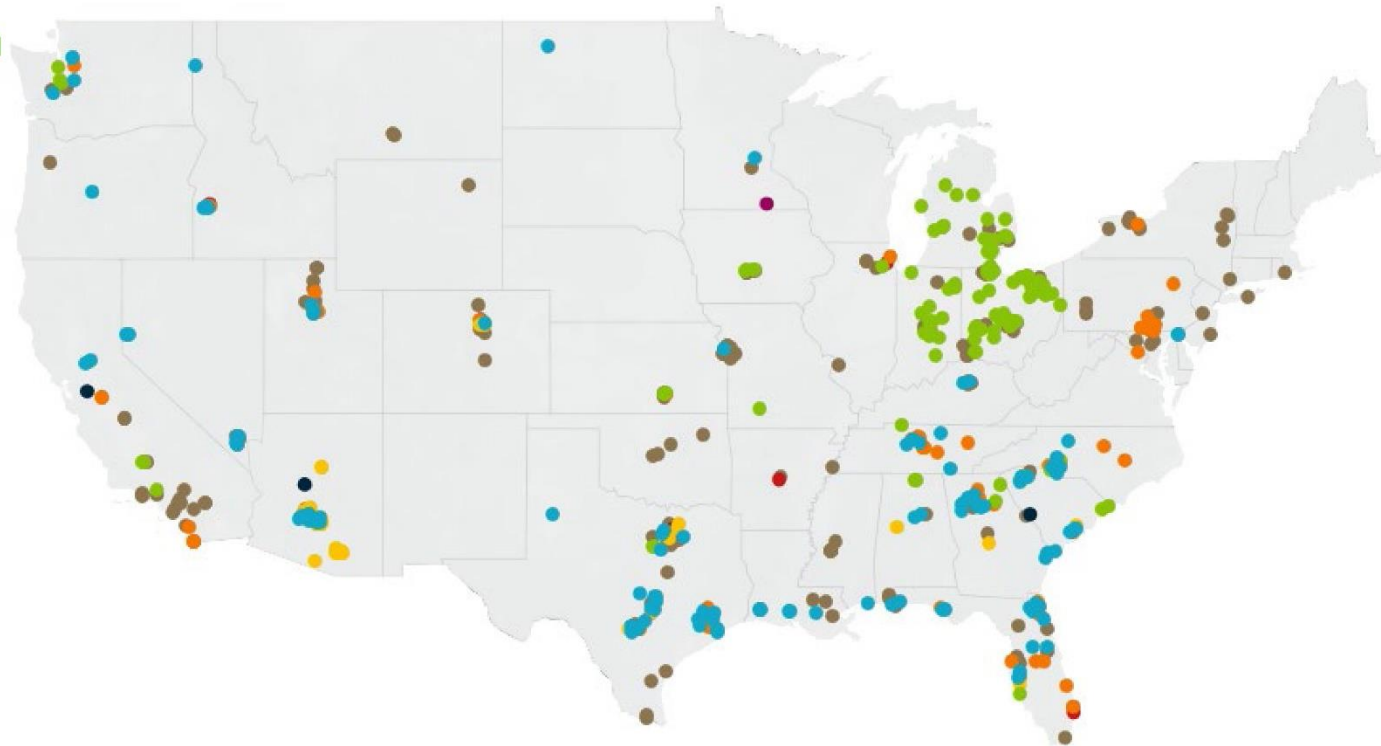


JOHN BURNS
REAL ESTATE CONSULTING

BTR Landscape

The BTR industry has a variety of densities that have tended to concentrate regionally, but that is changing

- 1-level rowhomes in the Midwest
- SF detached in Northern Florida
- Horizontal apartments in Southern Florida



JOHN BURNS
REAL ESTATE CONSULTING

COMMUNITY TYPE

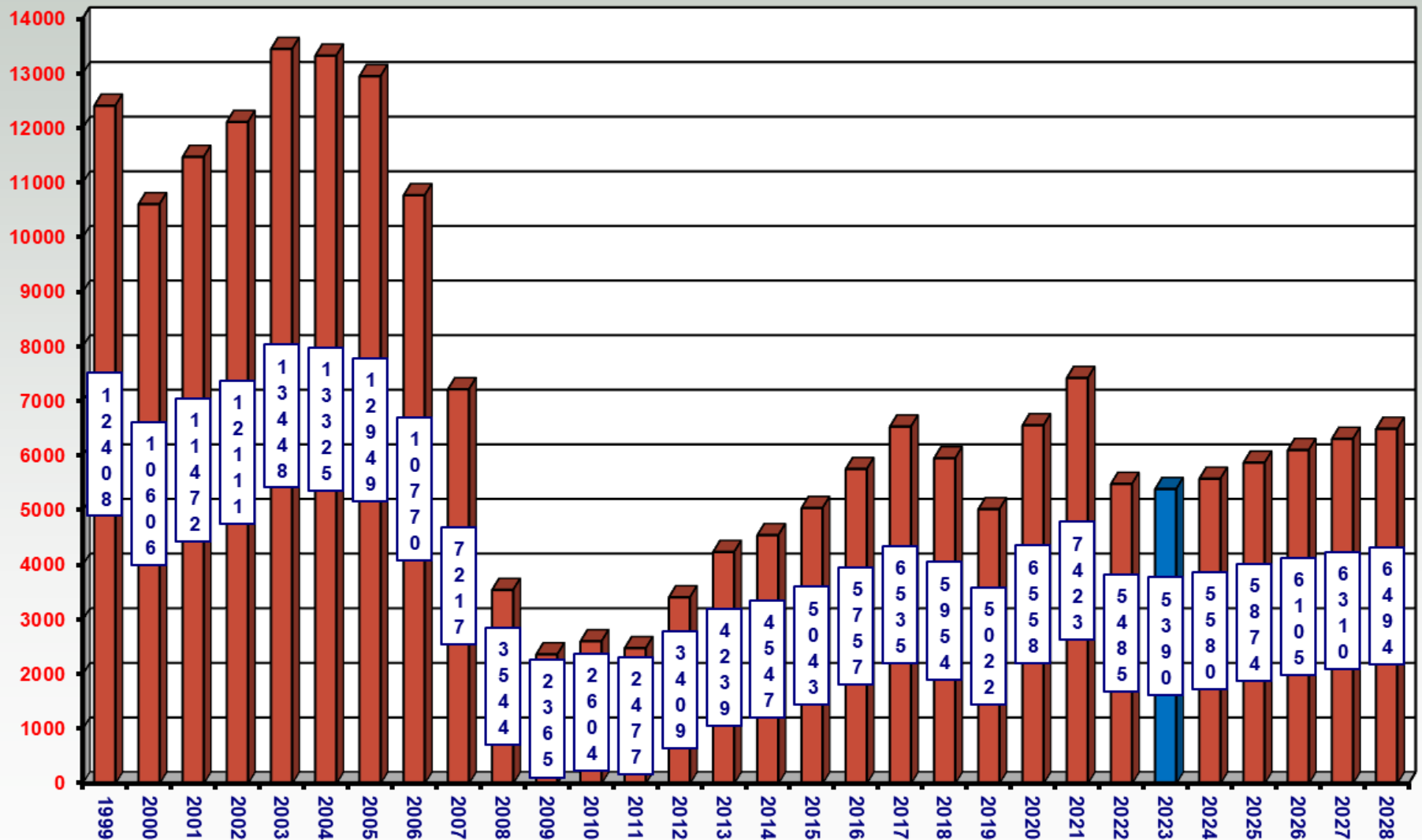
- Single-Family Detached
- Single-Level Rowhome
- Horizontal Apartments
- Townhomes
- Luxury - Attached
- Luxury - Detached
- Duplex
- TBD

Published July 2016

* that we have been able to identify

JOHN BURNS
REAL ESTATE CONSULTING

Permit History & Forecast



MarketGraphics Areas of Kansas City

9 Counties
32 MG Areas
8 Price-Points
256 Sub-Markets

Dan Whitney
Landmarketing, Inc.
Offering **MarketGraphics &
Land Advisors Brokerage**
(913) 927-4818

www.mgresearch.net
www.landadvisors.com

